



# Morecambe Offshore Windfarm: Generation Assets Environmental Statement

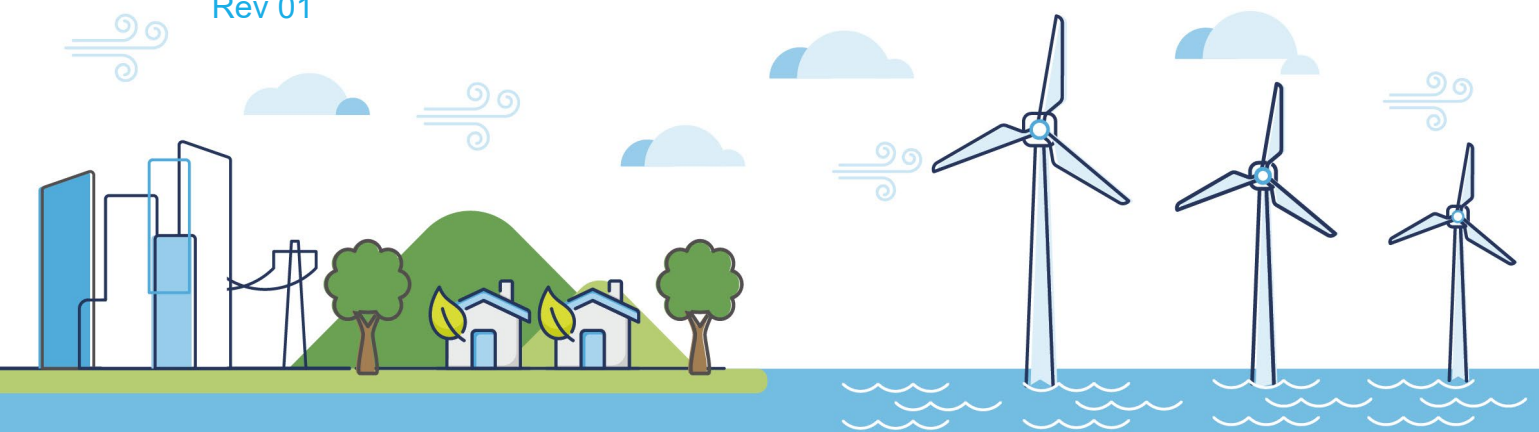
## Volume 5

### Chapter 18 SLVIA Figures (Part 25 of 34)

PINS Document Reference: 5.3.18.25

APFP Regulation: 5(2)(a)

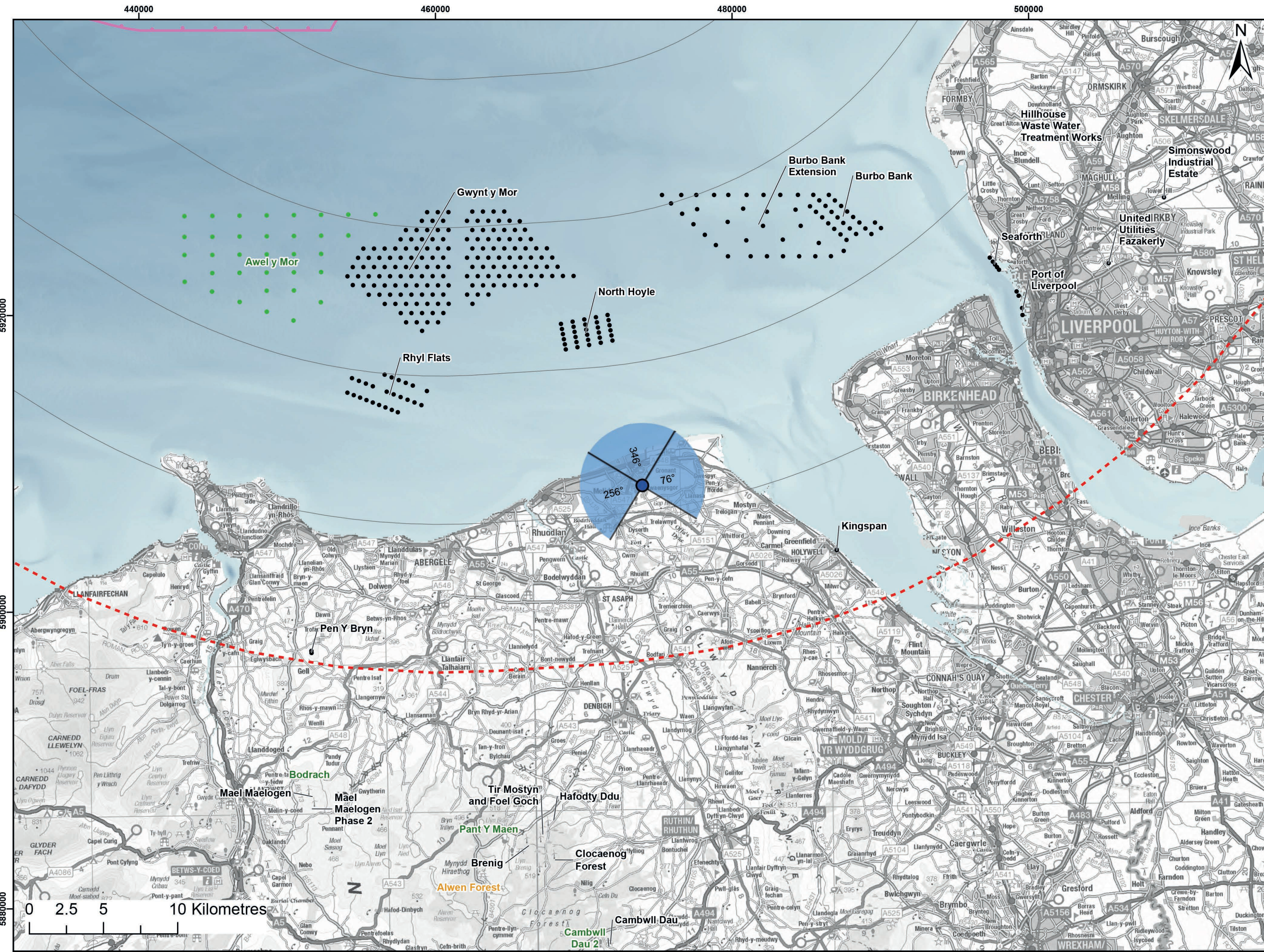
Rev 01



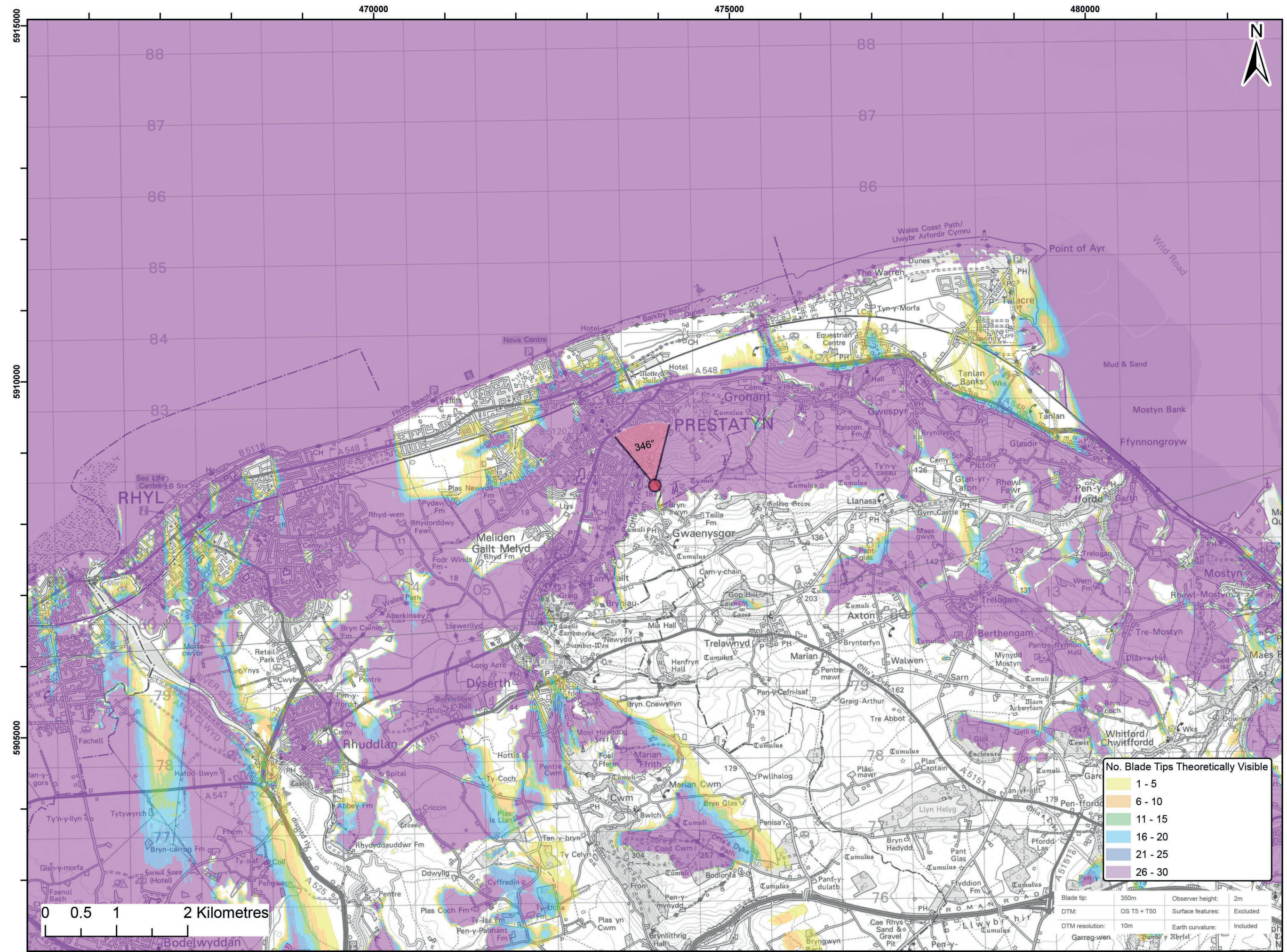
## Document History

<b>Doc No</b>	MOR001-FLO-CON-ENV-FIG-1180	<b>Rev</b>	01
<b>Alt Doc No</b>	PC1165-RHD-ES-XX-DG-Z-0018		
<b>Document Status</b>	Approved for Use	<b>Doc Date</b>	May 2024
<b>PINS Doc Ref</b>	5.3.18.25	<b>APFP Ref</b>	5(2)(a)

<b>Rev</b>	<b>Date</b>	<b>Doc Status</b>	<b>Originator</b>	<b>Reviewer</b>	<b>Approver</b>	<b>Modifications</b>
01	May 2024	Approved for Use	Royal HaskoningDHV	Morecambe Offshore Windfarm Ltd	Morecambe Offshore Windfarm Ltd	n/a



Viewpoint Location Plan Baseline Panorama (90 Degree View)  
Scale: 1:200,000



Viewpoint Location Plan (53.5 Degree View)  
Scale: 1:50,000

Legend:

- Morecambe Offshore Wind Farm - Assumed WTG locations (30 x BT 310m(HAT))
- ▼ 90 Degree Field of View
- ▼ 53.5 Degree Field of View
- 10km Radii
- 60km Study Area
- Morecambe Offshore Windfarm Site

Cumulative Wind Farms Status

- Operational
- Under Construction
- Consented
- Application
- Scoping
- Pre-Application

© Crown copyright and database rights (2023) Ordnance Survey 0100031673.

Report:  
Morecambe Offshore Windfarm: Generation Assets Environmental Statement

Title:  
Viewpoint 19:  
Bryn-Illwyn Viewpoint (Prestatyn)

Figure: 18.42a	Drawing No: 211609				
Revision: P02	Date: 25/09/2023	Drawn: RA	Checked: SM	Size: A3	Scale: 1:50,000

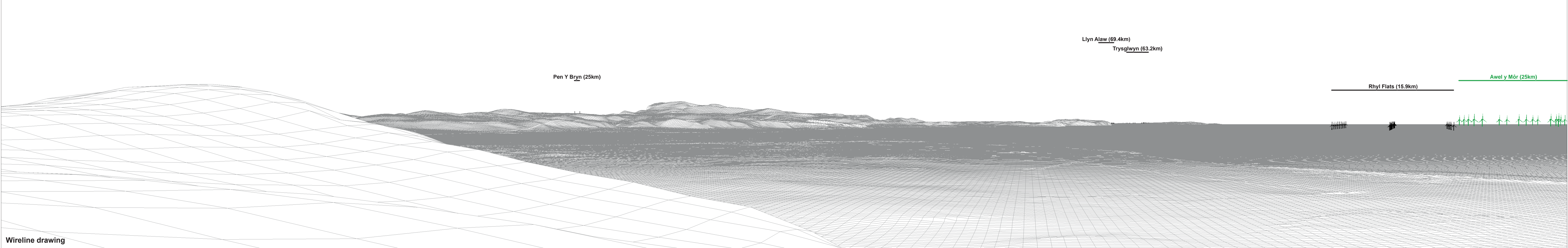
Co-ordinate system: WGS 1984 UTM Zone 30N





Baseline photograph

This image provides landscape and visual context only



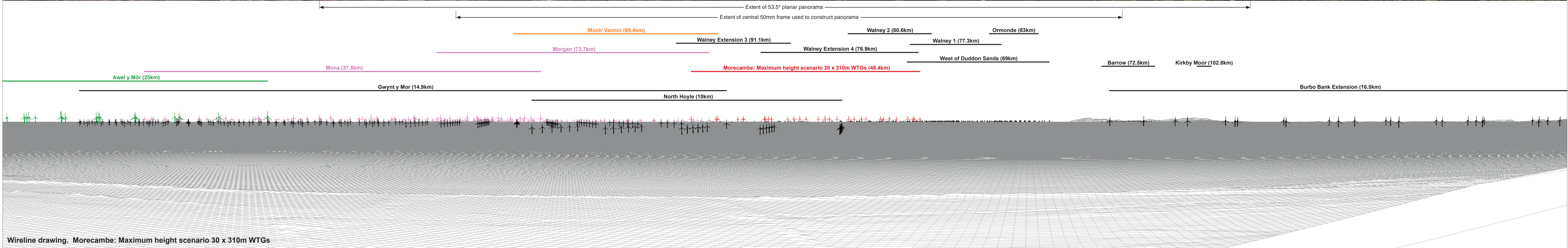
Wireline drawing

<p><b>OS reference:</b> 307444 E 381847 N  <b>Eye level:</b> 193.85 m AOD  <b>Direction of view:</b> 256°  <b>Nearest turbine:</b> 48.423 km</p>	<p><b>Horizontal field of view:</b> 90° (cylindrical projection)  <b>Principal distance:</b> 522 mm</p>	<p><b>Camera:</b> Canon EOS 6D Mark II  <b>Lens:</b> EF50mm f/1.4 USM  <b>Camera height:</b> 1.5 m AGL  <b>Date and time:</b> 19/07/2022, 10:36</p>	<p><b>Figure: 18:42b</b>  <b>Viewpoint 19: Bryn-Ilwyn Viewpoint (Prestatyn)</b></p>
--	---	---	---



Baseline photograph

This image provides landscape and visual context only



Wireline drawing. Morecambe: Maximum height scenario 30 x 310m WTGs

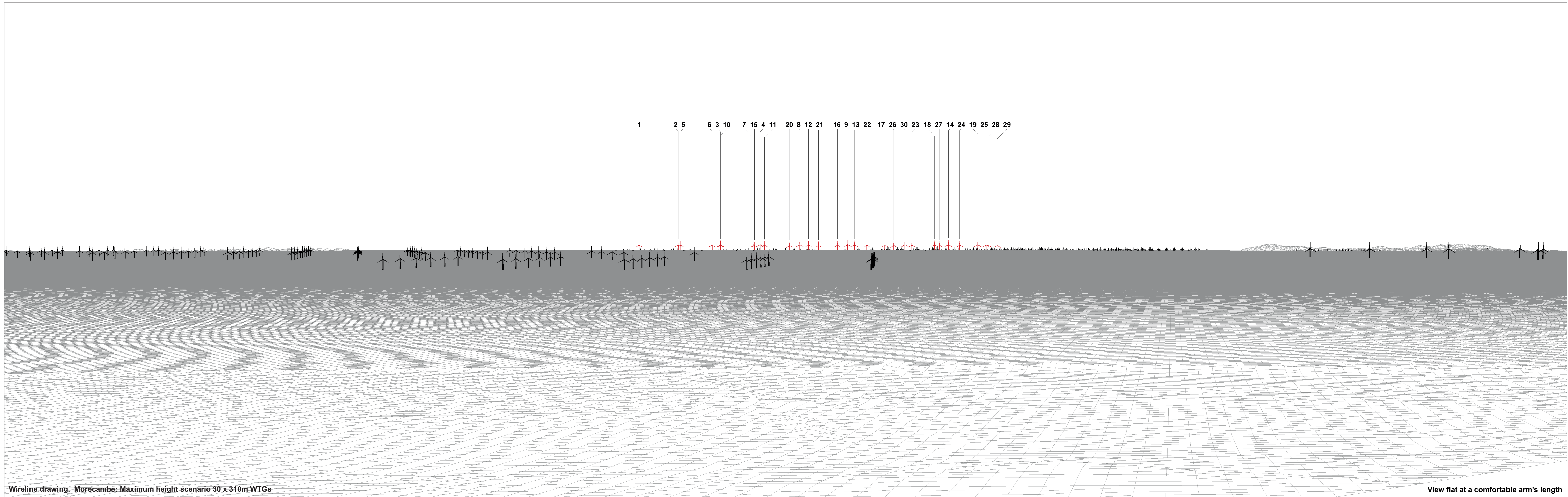
OS reference:	307444 E 381847 N	Horizontal field of view:	90° (cylindrical projection)	Camera:	Canon EOS 6D Mark II
Eye level:	193.85 m AOD	Principal distance:	522 mm	Lens:	EF50mm f/1.4 USM
Direction of view:	346°			Camera height:	1.5 m AGL
Nearest turbine:	48.423 km			Date and time:	19/07/2022, 10:36

Figure: 18:42c  
Viewpoint 19: Bryn-Ilwyn Viewpoint (Prestatyn)



<b>OS reference:</b>	307444 E 381847 N	<b>Horizontal field of view:</b>	90° (cylindrical projection)	<b>Camera:</b>	Canon EOS 6D Mark II
<b>Eye level:</b>	193.85 m AOD	<b>Principal distance</b>	522 mm	<b>Lens:</b>	EF50mm f/1.4 USM
<b>Direction of view:</b>	76°			<b>Camera height:</b>	1.5 m AGL
<b>Nearest turbine:</b>	48.423 km			<b>Date and time:</b>	19/07/2022, 10:36

**Figure: 18:42d**  
**Viewpoint 19: Bryn-llwyn Viewpoint (Prestatyn)**



Wireline drawing. Morecambe: Maximum height scenario 30 x 310m WTGs

View flat at a comfortable arm's length

<b>OS reference:</b>	307444 E 381847 N	<b>Horizontal field of view:</b>	53.5° (planar projection)	<b>Camera:</b>	Canon EOS 6D Mark II
<b>Eye level:</b>	193.85 m AOD	<b>Principal distance:</b>	812.5 mm	<b>Lens:</b>	EF50mm f/1.4 USM
<b>Direction of view:</b>	346°	<b>Paper size:</b>	841 x 297 mm (half A1)	<b>Camera height:</b>	1.5 m AGL
<b>Nearest turbine:</b>	48.423 km	<b>Correct printed image size:</b>	820 x 260 mm	<b>Date and time:</b>	19/07/2022, 10:36

Figure: 18:42e  
Viewpoint 19: Bryn-llwyn Viewpoint (Prestatyn)



Baseline Photograph

View flat at a comfortable arm's length

<b>OS reference:</b> 307444 E 381847 N	<b>Horizontal field of view:</b> 53.5° (planar projection)	<b>Camera:</b> Canon EOS 6D Mark II
<b>Eye level:</b> 193.85 m AOD	<b>Principal distance:</b> 812.5 mm	<b>Lens:</b> EF50mm f/1.4 USM
<b>Direction of view:</b> 346°	<b>Paper size:</b> 841 x 297 mm (half A1)	<b>Camera height:</b> 1.5 m AGL
<b>Nearest turbine:</b> 48.423 km	<b>Correct printed image size:</b> 820 x 260 mm	<b>Date and time:</b> 19/07/2022, 10:36

**Figure: 18:42f**  
**Viewpoint 19: Bryn-Ilwyn Viewpoint (Prestatyn)**